

 **BOEING**
COMPONENT
MAINTENANCE MANUAL

TO: ALL HOLDERS OF BIN PSU OXYGEN/LIGHT PANEL ASSY COMPONENT MAINTENANCE MANUAL
25-23-06

REVISION NO. 7 DATED JAN 01/94

HIGHLIGHTS

Pages which have been added or revised are outlined below together with the highlights of the revision. Remove and insert the affected pages as listed and enter Revision No. and date on the Record of Revision Sheet.

CHAPTER/SECTION

AND PAGE NO.

TITLE PAGE

1

101-104

301

701

1006-1010,1012,

1014-1020

DESCRIPTION OF CHANGE

Added top assemblies 417T3053-241, -245 per latest engineering.

25-23-06

HIGHLIGHTS

01.101

Page 1

Mar 01/94

PSU OXYGEN/LIGHT PANEL ASSEMBLY

PART NUMBERS 417T3053-2,-4,-9,-10,-19,-29,-30,
-41,-43,-45,-46,-49,-50,
-102,-104,-109,-110,-119,
-129,-130,-151,-202,-204,
-209,-210,-230,-241,-245,
-251

COMPONENT MAINTENANCE MANUAL
WITH
ILLUSTRATED PARTS LIST

25-23-06

TITLE PAGE

Page 1

Jan 01/94

01.1



REVISION RECORD

- Retain this record in front of manual. On receipt of revision, insert revised pages in the manual, and enter revision number, date inserted and initial.

REVISION NUMBER	REVISION DATE	DATE FILED	BY	REVISION NUMBER	REVISION DATE	DATE FILED	BY

25-23-06

REVISION RECORD

01

Page 1

Jul 10/83


BOEING
 COMPONENT
 MAINTENANCE MANUAL
TEMPORARY REVISION AND SERVICE BULLETIN RECORD

BOEING SERVICE BULLETIN	BOEING TEMPORARY REVISION	OTHER DIRECTIVE	DATE OF INCORPORATION INTO MANUAL
		MCB1233-019 PRR C12009 PRR B11700-3 PRR B11700-503	Oct 10/82 Jan 10/84 Oct 01/90 Apr 01/92

25-23-06

TR & SB RECORD

01.1

Page 1

Apr 01/92


BOEING
 COMPONENT
 MAINTENANCE MANUAL

PAGE	DATE	CODE	PAGE	DATE	CODE
25-23-06			CLEANING		
			401	APR 01/92	01.1
			402	BLANK	
TITLE PAGE			REPAIR-GENERAL		
*1	JAN 01/94	01.1	601	JUL 10/83	01
2	BLANK		602	BLANK	
REVISION RECORD			REPAIR 1-1		
1	JUL 10/83	01	601	APR 01/92	01.1
2	BLANK		602	APR 01/92	01.1
TR & SB RECORD			603	APR 01/92	01.1
1	APR 01/92	01.1	604	APR 01/92	01.1
2	BLANK		605	APR 01/92	01.1
LIST OF EFFECTIVE PAGES			606	BLANK	
*1	JAN 01/94	01	ASSEMBLY		
THRU LAST PAGE			*701	JAN 01/94	01.1
CONTENTS			702	APR 01/92	01.1
1	JUL 10/83	01	ILLUSTRATED PARTS LIST		
2	BLANK		1001	APR 01/92	01.101
INTRODUCTION			1002	APR 01/92	01.1
1	OCT 01/90	01.1	1003	APR 01/92	01.1
2	BLANK		1004	APR 01/92	01.1
DESCRIPTION & OPERATION			1005	APR 01/92	01.1
1	JUL 10/83	01	*1006	JAN 01/94	01.1
2	BLANK		*1007	JAN 01/94	01.1
TESTING & TROUBLE SHOOTING			*1008	JAN 01/94	01.1
*101	JAN 01/94	01.1	*1009	JAN 01/94	01.1
*102	JAN 01/94	01.1	*1010	JAN 01/94	01.1
*103	JAN 01/94	01.1	1011	BLANK	
*104	JAN 01/94	01.1	*1012	JAN 01/94	01.1
DISASSEMBLY			1013	APR 01/92	01.1
*301	JAN 01/94	01.1	*1014	JAN 01/94	01.1
302	APR 01/92	01.1	*1015	JAN 01/94	01.1
			*1016	JAN 01/94	01.1
			*1017	JAN 01/94	01.1
			*1018	JAN 01/94	01.1
			*1019	JAN 01/94	01.1
			*1020	JAN 01/94	01.1
			1021	BLANK	
			1022	APR 01/92	01.1

* = REVISED, ADDED OR DELETED

25-23-06EFFECTIVE PAGES
CONTINUED Page 1
01 Jan 01/94

PAGE	DATE	CODE	PAGE	DATE	CODE
ILLUSTRATED PARTS LIST		CONT.			
1023	APR 01/92	01.1			
1024	APR 01/92	01.1			
1025	APR 01/92	01.1			
1026	APR 01/92	01.1			
1027	APR 01/92	01.1			
1028	APR 01/92	01.1			
1029	BLANK				
1030	APR 01/92	01.1			
1031	APR 01/92	01.1			
1032	APR 01/92	01.1			
1033	BLANK				
1034	APR 01/92	01.1			
1035	APR 01/92	01.1			
1036	BLANK				

* = REVISED, ADDED OR DELETED

25-23-06

EFFECTIVE PAGES
 LAST PAGE Page 2
 01 Jan 01/94

TABLE OF CONTENTS

<u>Paragraph Title</u>	<u>Page</u>
Description and Operation	1
Testing and Trouble Shooting.	101
Disassembly	301
Cleaning.	401
Check*[1]	
Repair.	601
Assembly.	701
Fits and Clearances (Not Applicable)	
Special Tools (Not Applicable)	
Illustrated Parts List.	1001

*[1] Special instructions not required; use standard industry practices.

25-23-06

01

CONTENTS
 Page 1
 Jul 10/83



INTRODUCTION

The instructions in this manual provide the information necessary to perform maintenance functions ranging from simple checks and replacement to complete shop-type repair.

This manual is divided into separate sections:

- | | |
|--|------------------------------|
| 1. Title Page | 4. List of Effective Pages |
| 2. Record of Revisions | 5. Table of Contents |
| 3. Temporary Revision &
Service Bulletin Record | 6. Introduction |
| | 7. Procedures & IPL Sections |

Refer to the Table of Contents for the page location of applicable sections. An asterisked flagnote *[] in place of the page number indicates that no special instructions are provided since the function can be performed using standard industry practices.

The beginning of the REPAIR section includes a list of the separate repairs, a list of applicable standard Boeing practices, and an explanation of the True Position Dimensioning symbols used.

An explanation of the use of the Illustrated Parts List is provided in the Introduction to that section.

All weights and measurements used in the manual are in English units, unless otherwise stated. When metric equivalents are given they will be in parentheses following the English units.

Design changes, optional parts, configuration differences and Service Bulletin modifications create alternate part numbers. These are identified in the Illustrated Parts List (IPL) by adding an alphabetical character to the basic item number. The resulting item number is called an alpha-variant. Throughout the manual, IPL basic item number references also apply to alpha-variants unless otherwise indicated.

Verification:

Testing and Trouble Shooting: Feb 28/85

Disassembly: Feb 28/85

Assembly: Feb 28/85

25-23-06

INTRODUCTION

01.1

Page 1

Oct 01/90



DESCRIPTION AND OPERATION

1. Description and Operation

- A. The PSU oxygen/light panel assembly consists of reading lights, an attendant call light switch, and a framework to hold an emergency oxygen supply assembly.

2. Leading Particulars (Approximate)

Height -- 2 inches
Width -- 9 inches
Length -- 11 inches

25-23-06

DESCRIPTION & OPERATION

01

Page 1

Jul 10/83

TESTING AND TROUBLE SHOOTING1. Test Equipment

A. DC power supply – variable output (5–26.5v dc)

2. Continuity Check (Assemblies 417T3053–29, –30, –45, –129, –130, –230, –245, IPL Fig. 1)

A. Continuity check using ohmmeter (Fig. 101).

(1) Pin 1 to pin 8.

(2) Pin 2 to pin 9.

(3) Connector (10), pin 4 to connector (15) pin 5.

(4) Connector (10), pin 3 to pin 7.

(5) Connector (10), pin 5 to connector (15) pin 6.

3. Continuity Check (Assemblies 417T3053–9, –10, –19, –46, –49, –50, –109, –110, –119, –209, –210)

A. Continuity check using ohmmeter (Fig. 101, Sheet 2).

(1) Pin 1 to pin 8.

(2) Pin 2 to pin 9.

(3) Connector (10), pin 4 to connector (15), pin 3.

(4) Connector (10), pin 3 to connector (15), pin 7.

(5) Connector (10), pin 5 to connector (15), pin 5.

4. Light Check (IPL Fig. 1)

A. Assemblies 417T3053–29, –30, –45, –129, –130, –230, –245, –9, –10, –19, –46, –49, –50, –109, –110, –119, –209, –210 (Fig. 101, Sheets 1 and 2)

(1) Apply 26.5 volts to pin 7. Ground connector (15), pin 3 for assemblies –29, –30, –45, and –129 or ground connector (15), pin 6 for assemblies 417T3053–9, –10, –19, –46, –49, –50, –109, –110, and –119. Check that lamp LT2 lights up.

(2) Disconnect ground and apply to connector (15), pin 4. Check that lamp LT1 lights.

(3) Disconnect 26.5 volts from pin 7.

25–23–06

TESTING & TROUBLE SHOOTING

01.1

Page 101

Jan 01/94

(4) Apply 5 volts to pin 8 and ground pin 9. Check that indicator lamp lights.

B. Assemblies 417T3053-2, -4, -41, -43, -102, -104, -202, -204, -241

(1) Apply 26.5 volts to pin 3. Ground pin 4. Check that LT1 lamp lights.

(2) Remove ground from pin 4 and apply to pin 5. Check that lamp LT2 lights.

(3) Remove 26.5 volts from pin 3.

(4) Apply 5 volts to pin 1 and ground pin 2. Check that indicator lamp lights.

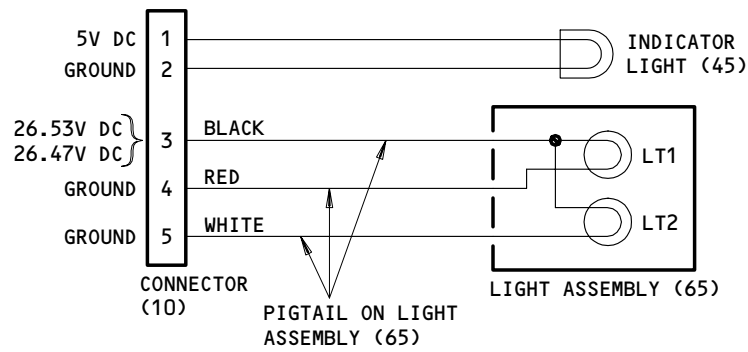
25-23-06

TESTING & TROUBLE SHOOTING

01.1

Page 102

Jan 01/94



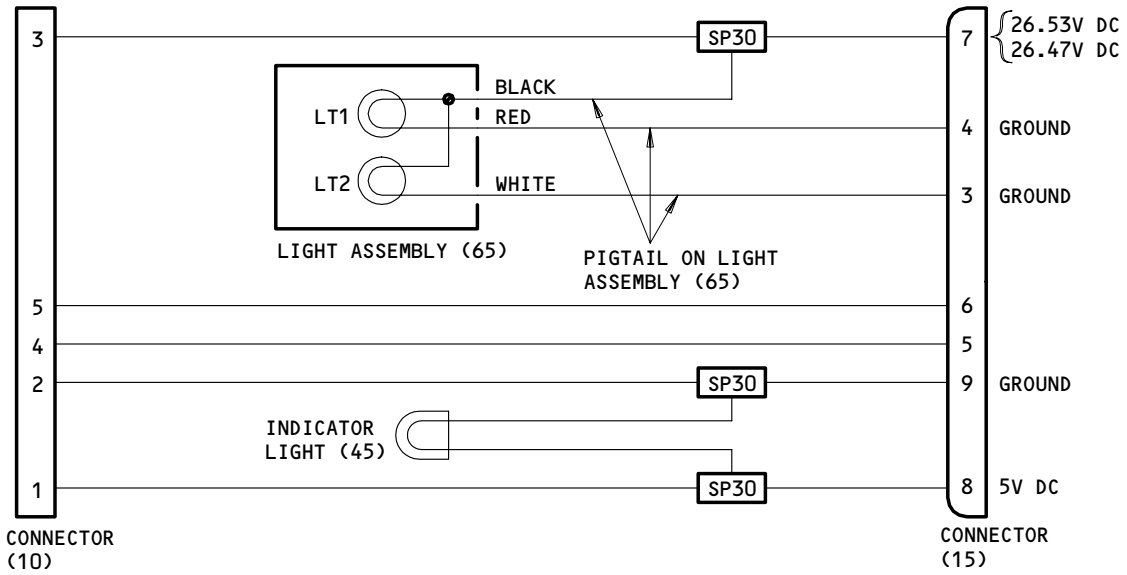
ASSEMBLIES 417T3053-2,-4,-41,-43,-102,-104,-202,-204,-241

ITEM NUMBERS REFER TO IPL FIG. 1.

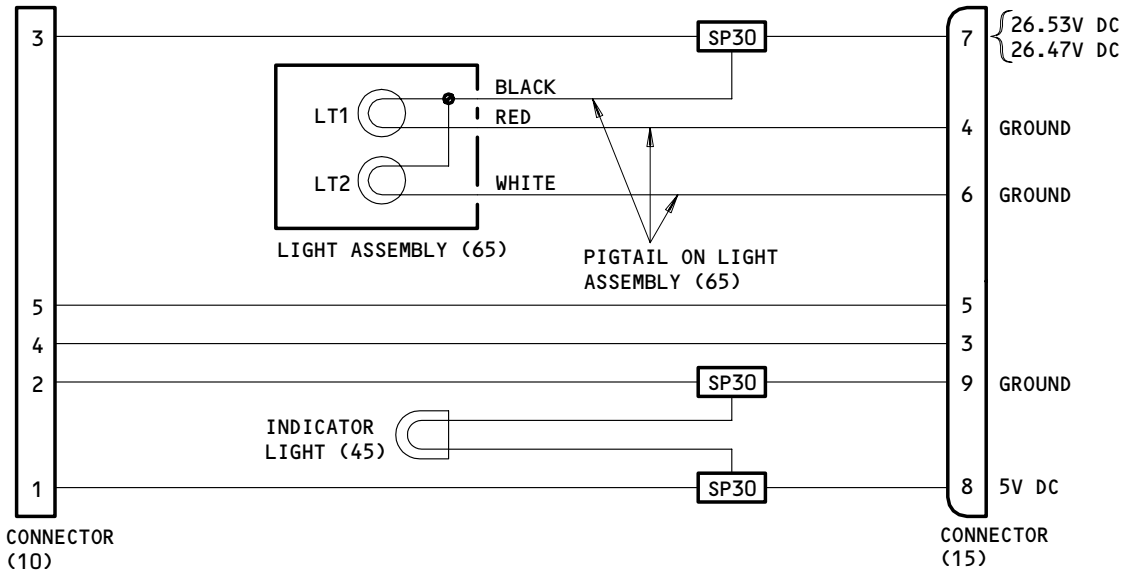
Continuity Test
Figure 101 (Sheet 1)

25-23-06

TESTING & TROUBLE SHOOTING
01.1 Page 103
Jan 01/94



ASSEMBLIES 417T3053-29,-30,-45,-129,-130,-230,-245



ASSEMBLIES 417T3053-9,-10,-19,-46,-49,-50,-109,-110,-119,-209,-210,

ITEM NUMBERS REFER TO IPL FIG. 1.

**Continuity Test
 Figure 101 (Sheet 2)**

25-23-06

DISASSEMBLY1. Disassembly (IPL Fig. 1)

NOTE: Disassemble component only as necessary to complete fault isolation, determine part serviceability, perform required repairs, and restore unit to serviceable condition.

A. Use standard industry practices and the following steps for disassembly.

CAUTION: FACE PANEL (90D) IS VISIBLE FROM CABIN INTERIOR. TAKE SPECIAL CARE TO AVOID MARRING VISIBLE SURFACES DURING DISASSEMBLY AND OVERHAUL.

B. Remove screws (35B) and wire clamps (40) from frame assembly (95).

C. Remove indicator light (45A) as follows to avoid damaging face panel.

(1) Remove lens and lamp from light assembly.

(2) Unsolder wire from top of light assembly.

(3) Loosen attaching nut and remove.

D. Remove face panel (90D).

(1) Remove nuts (85), washers (75, 80A), and screws (70C).

NOTE: Do not disassemble frame assembly (95 thru 105) unless necessary for repair or replacement.

E. Remove reading light assembly (65).

(1) Remove screws (35B) and wire clamps (42) from frame assembly.

(2) Remove nuts (52) and washers (53, 55, 60) from reading light assembly, and note light LT1 position and mark using appropriate tape.

25-23-06

DISASSEMBLY

01.1

Page 301

Jan 01/94

- (3) Remove screws (35), plug (43) and clamp (42) from face assembly.
- (4) Disassemble connectors (10 and 15).
- (5) Lift out reading light assembly (65).

2. Disassembly (IPL Fig. 3)

NOTE: Disassemble component only as necessary to complete fault isolation, determine part serviceability, perform required repairs, restore unit to serviceable condition.

A. Use standard industry practices and the following steps for disassembly.

CAUTION: FACE PANEL (60) IS VISIBLE FROM CABIN INTERIOR. TAKE SPECIAL CARE TO AVOID MARRING VISIBLE SURFACES DURING DISASSEMBLY AND OVERHAUL.

B. Remove screws (40), washers (45), and nuts (50) to remove face panel (60) from frame assembly (54).

NOTE: Do not disassemble frame assembly (65 thru 10) unless necessary for repair or replacement.

25-23-06

DISASSEMBLY

01.1

Page 302

Apr 01/92



CLEANING

1. Clean all parts except plastic and interior decorative surfaces using standard industry practices (Ref 20-30-03) and additional procedures in the following step.

CAUTION: USE ONLY LISTED CLEANING MATERIALS. USE OF OTHER MATERIALS OR PROCESSES MAY DAMAGE PARTS. DETERIORATION OF PLASTIC MAY BE INSTANTANEOUS THOUGH NOT VISUALLY DETECTABLE.

2. Clean face panel (90D, IPL Fig. 1) per 20-30-03 using procedures for cleaning of interior painted and plastic surfaces.
3. Clean face panel (60, IPL Fig. 3) per 20-30-03 using procedures for cleaning of interior painted and plastic surfaces.

25-23-06

CLEANING
Page 401
Apr 01/92

01.1


BOEING
 COMPONENT
 MAINTENANCE MANUAL
REPAIR – GENERAL1. Content

- A. Repair, refinish, and replacement procedures are included in separate repair sections as follows:

<u>P/N</u>	<u>NAME</u>	<u>REPAIR</u>
--	MISCELLANEOUS PARTS REFINISH	1-1

2. Standard Practices

- A. Refer to the following standard practices as applicable for details of procedures in individual repairs.

20-11-03	Repair of Electrical Terminations and Electrical Bonding Areas
20-12-01	Soldering Electrical Connections
20-30-03	General Cleaning Procedures
20-41-01	Decoding Table for Boeing Finish Codes
20-41-02	Application of Chemical and Solvent Resistant Finishes
20-43-01	Chromic Acid Anodizing

3. Materials

NOTE: Equivalent substitutes may be used.

- A. Primer -- BMS 10-11, Type 1 (Ref 20-60-02)
 -- BMS 10-83, Type 1 (Ref 20-60-02)
- B. Enamel -- BMS 10-11, Type 2, Flat Black (Ref 20-60-02)
 -- BMS 10-83, Type 2, Black Semi-Gloss (Ref 20-60-02)

25-23-06

REPAIR-GENERAL

01

Page 601

Jul 10/83

MISCELLANEOUS PARTS REFINISH – REPAIR 1-1

NOTE: Refer to REPAIR-GEN for list of applicable standard practices.

NOTE: Repair of parts listed in Fig. 601 consists of restoring the original finish.

IPL FIG. & ITEM	MATERIAL	FINISH
<u>Fig. 1</u> Face Panel (90D)		Apply BMS 10-83, type 1 primer and BMS 10-83, type 2 enamel, black semi-gloss, to surfaces shown in Fig. 602. Overspray is not allowed (F-22.05-701).
<u>Fig. 2</u> Brackets (35,60,95), Channels (105,115), Angles (120,125,130,135)	Al alloy	Chromic acid anodize per MIL-A-8625, type 1. Apply one coat BMS 10-11, type 1 primer (F-18.13).
Frame Assy (1,1A,5,5A,10)	Al alloy	Apply one coat BMS 10-11, type 2, epoxy enamel, flat black, to surfaces shown in Fig. 603. Overspray is permitted. Color approval is not required (SRF-14.903-701).
<u>Fig. 3</u> Face Panel (60)		Apply BMS 10-83, type 1 primer and BMS 10-83, type 2 enamel, black semi-gloss, to surfaces shown in Fig. 602. Overspray is not allowed (F-22.05-701).

Refinish Details
 Figure 601 (Sheet 1)

25-23-06

REPAIR 1-1

01.1

Page 601

Apr 01/92

IPL FIG. & ITEM	MATERIAL	FINISH
Brackets (110), Channels (90,95), Angles (100,105)	Al alloy	Chromic acid anodize per MIL-A-8625, type 1. Apply one coat BMS 10-11, type 1 primer (F-18.13).
Frame Assy (65)	Al alloy	Apply one coat BMS 10-11, type 2, epoxy enamel, flat black, to surfaces shown in Fig. 603. Overspray is permitted. Color approval is not required (SRF-14.903-701).

Refinish Details
 Figure 601 (Sheet 2)

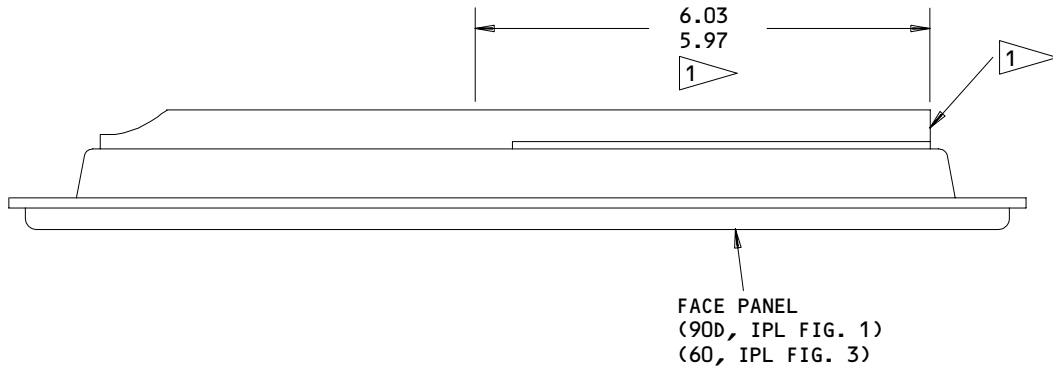
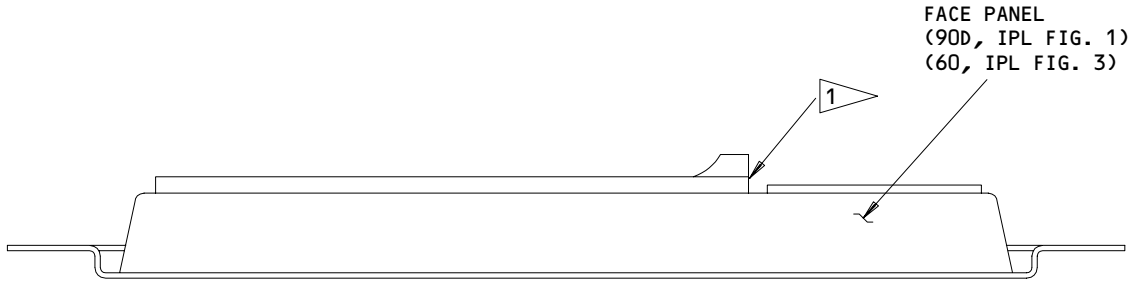
25-23-06

REPAIR 1-1

01.1

Page 602

Apr 01/92



1 APPLY BMS 10-83, TYPE 1 PRIMER AND BMS 10-83, TYPE 2 ENAMEL, BLACK SEMI-GLOSS -- OVERSPRAY NOT ALLOWED.

ALL DIMENSIONS ARE IN INCHES

417T3080
Face Panel Refinish
Figure 602

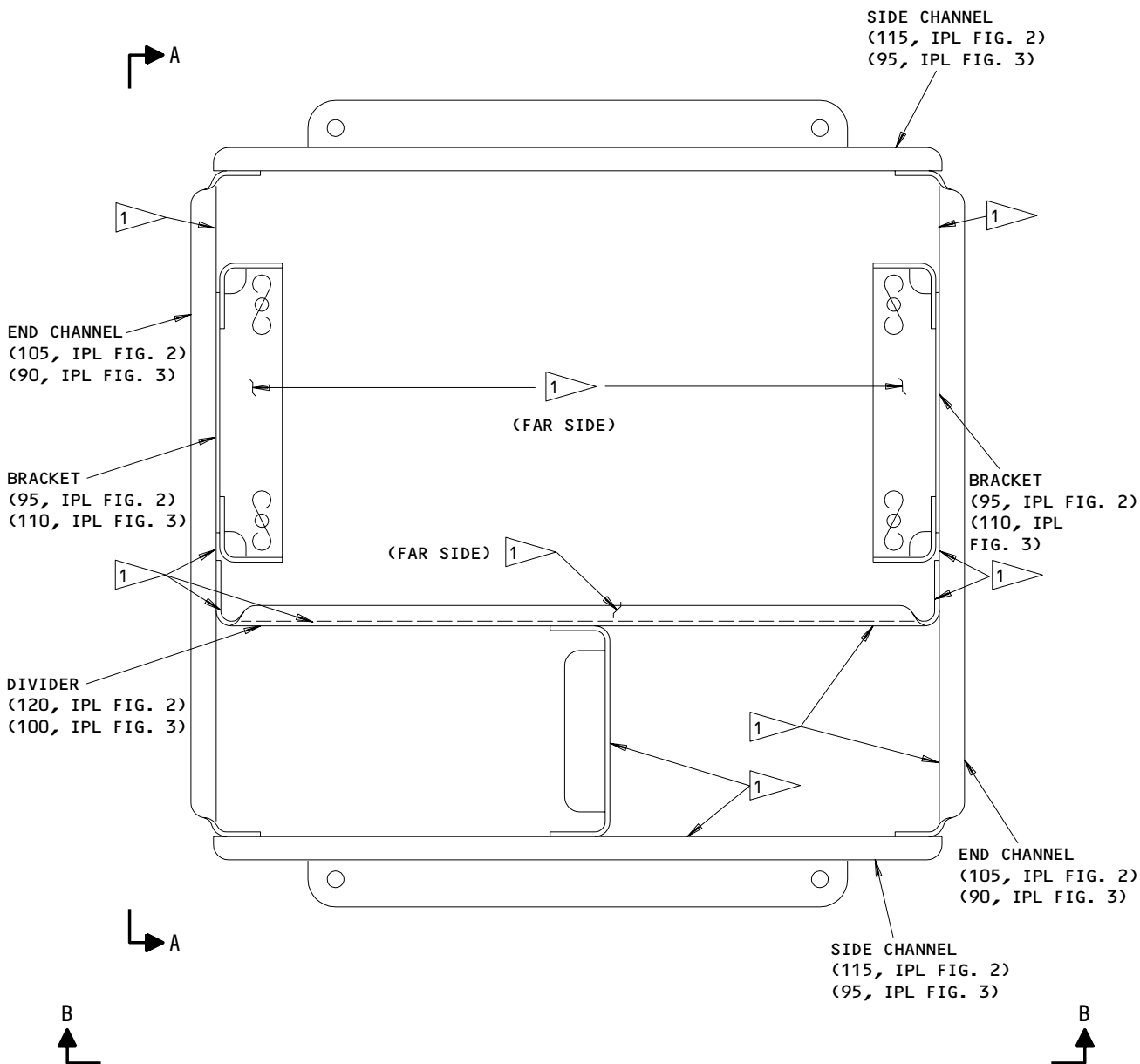
25-23-06

REPAIR 1-1

Page 603

Apr 01/92

01.1



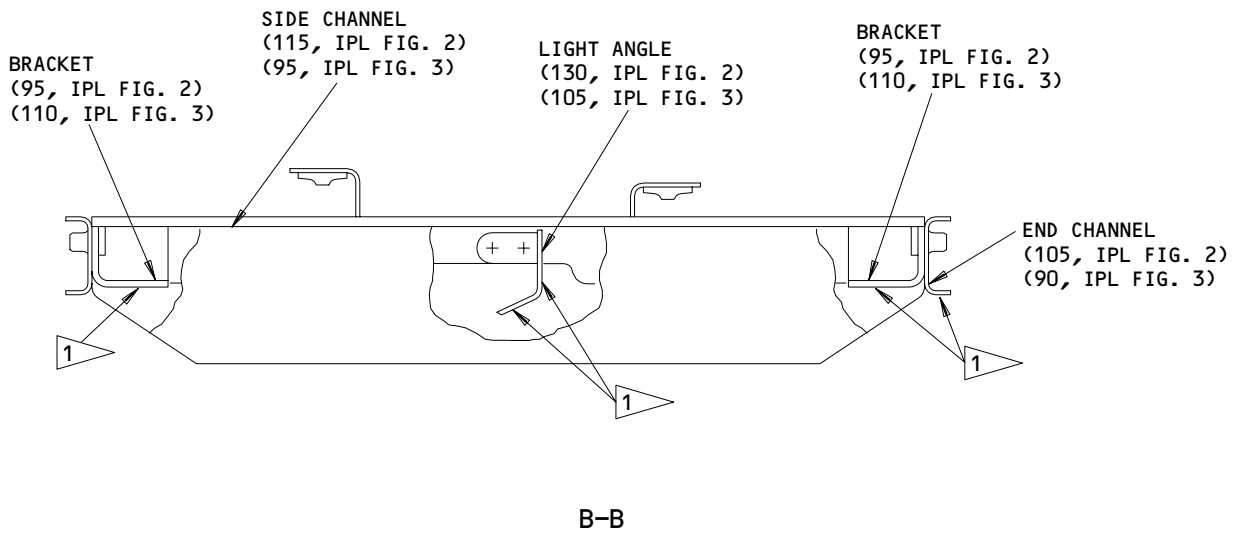
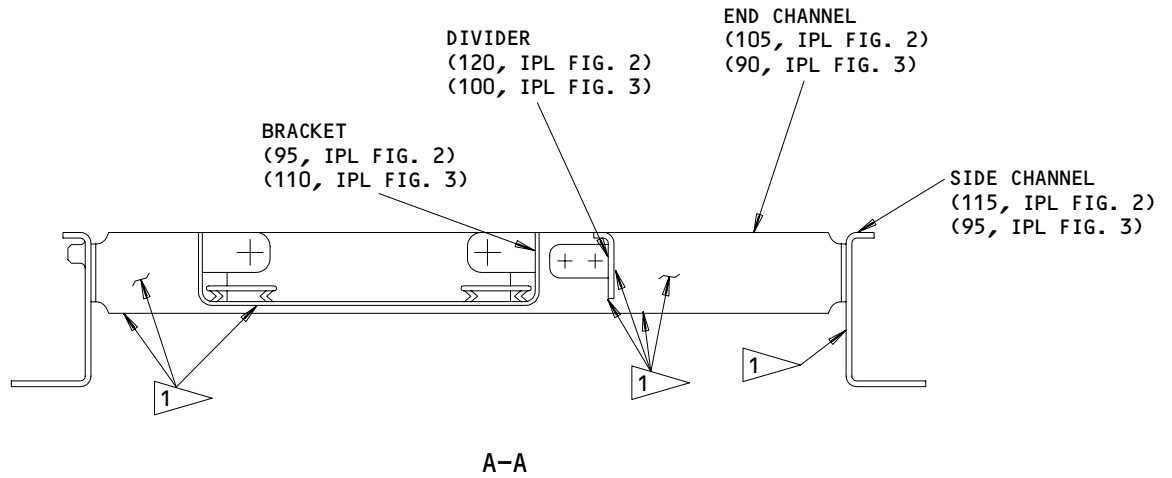
1 APPLY ONE COAT BMS 10-11 TYPE 2 FLAT BLACK EPOXY ENAMEL - OVERSPRAY ALLOWED.

417T3053
 Frame Assembly Refinish
 Figure 603 (Sheet 1)

25-23-06

REPAIR 1-1
 Page 604
 Apr 01/92

01.1



1 APPLY ONE COAT BMS 10-11, TYPE 2 FLAT BLACK EPOXY ENAMEL - OVERSPRAY ALLOWED.

417T3053
 Frame Assembly Refinish
 Figure 603 (Sheet 2)

25-23-06

REPAIR 1-1

01.1

Page 605

Apr 01/92

ASSEMBLY1. Materials

NOTE: Equivalent substitutes may be used.

A. Insulating Compound -- BMS 5-37, class A

2. Assembly (IPL Fig. 1)

CAUTION: FACE PANEL (90D) IS VISIBLE FROM CABIN INTERIOR. TAKE PROPER CARE TO ENSURE VISIBLE SURFACES ARE NOT MARRED DURING ASSEMBLY OR STORAGE.

A. Use standard industry practices and the following steps for assembly.

B. Attach face panel (90D) to frame assembly (95) using screws (70C), washers (75 and 80A), and nuts (85).

C. Install indicator light (45A) as follows, to avoid damaging face panel:

(1) Remove lens and lamp from light assembly.

(2) Attach light assembly to face panel as shown in Fig. 701.

(3) Solder wires to light assembly as shown in Fig. 701.

(4) Apply insulating compound over solder joint and exposed wire.

(5) Re-install lens and lamp into light assembly.

(6) Route wires thru wire clamps (40). Attach wire clamps to side channel (115, IPL Fig. 2) with screws (35B). Allow 0.25 inch slack in wire between indicator light and first clamp to allow for panel adjustment.

D. Install reading light assembly (65):

(1) Attach reading light assembly (65) to angle (130, IPL Fig. 2) with nut (52) and washers (53, 55, 60) (note the position of light LT1).

(2) Attach end channel to reading light assembly with nut (52) and washers (53, 55, 60).

(3) Route wires through wire clamps (42) and attach clamps to end channel (105, IPL Fig. 2) with screws (35B). Insert plug (43) in clamp (42); route wires through clamp and attach clamp to side channel (115, IPL Fig. 2).

25-23-06ASSEMBLY
Page 701
Jan 01/94

01.1

3. Assembly (IPL FIG. 3)

CAUTION: FACE PANEL (60) IS VISIBLE FROM CABIN INTERIOR. TAKE PROPER CARE TO AVOID MARRING VISIBLE SURFACES DURING ASSEMBLY OR STORAGE.

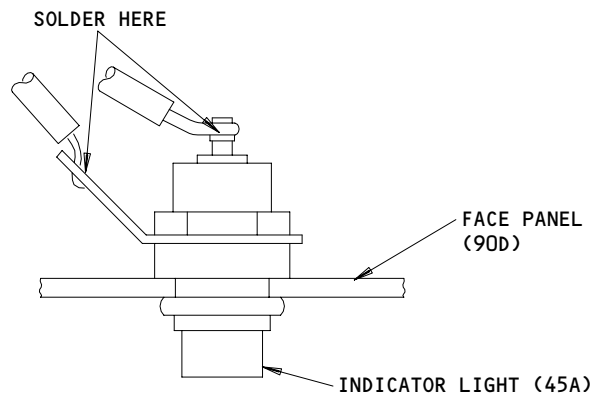
- A. Use standard industry practices and the following steps for assembly.
- B. Attach face panel (60) to frame assembly (65) using screws (40), washers (45), and nuts (50).

4. Storage

- A. Use standard industry practices for storage of this component and additional procedures in the following steps.

CAUTION: PLASTIC PARTS, VISIBLE FROM CABIN INTERIOR WHEN INSTALLED, MUST BE SUITABLY PROTECTED TO PREVENT DAMAGE DURING STORAGE.

- B. Protect unit from handling damage with adequate structure and packaging.
- C. For further information, refer to 20-70-01, Protection, Storage, and Handling of Airplane Components, and to 20-44-02, Temporary Protective Coatings.



Indicator Light Attachment
Figure 701

25-23-06

ASSEMBLY
Page 702
Apr 01/92

01.1



ILLUSTRATED PARTS LIST

1. This section lists and illustrates replaceable or repairable component parts. The Illustrated Parts Catalog contains a complete explanation of the Boeing part numbering system.

2. Indentures show parts relationships as follows:

Assembly

Detail Parts for Assembly

Subassembly

Attaching Parts for Subassembly

Detail Parts for Subassembly

Detail Installation Parts (Included only if installation parts may be returned to shop as part of assembly)

3. One use code letter (A, B, C, etc.) is assigned in the EFF CODE column for each variation of top assembly. All listed parts are used on all top assemblies except when limitations are shown by use code letter opposite individual part entires.

4. Letter suffixes (alpha-variants) are added to item numbers for optional parts, Service Bulletin modification parts, configuration differences (except left- and right-hand parts), product improvement parts, and parts added between two sequential item numbers. The alpha-variant is not shown on illustrations when appearance and location of all variants of the part is the same.

5. Service Bulletin modifications are shown by the notations PRE SB XXXX and POST SB XXXX.

A. When a new top assembly part number is assigned by Service Bulletin, the notations appear at the top assembly level only. The configuration differences at detail part level are then shown by use code letter.

B. When the top assembly part number is not changed by the Service Bulletin, the notations appear at the detail part level.

6. Parts Interchangeability

Optional
(OPT)

The parts are optional to and interchangeable with other parts having the same item number.

Supersedes, Superseded By
(SUPSDS, SUPSD BY)

The part supersedes and is not interchangeable with the original part.

Replaces, Replaced By
(REPLS, REPLD BY)

The part replaces and is interchangeable with, or is an alternate to, the original part.

25-23-06

ILLUSTRATED PARTS LIST
01.101 Page 1001
Apr 01/92

VENDORS

S5006 KOITO MFG CO LTD
4-8-3 TAKANAWA MINATO KU
TOKYO, 108 JAPAN

02660 AMPHENOL CORP INDUSTRIAL TECHNOLOGY DIV
358 HALL AVENUE
WALLINGFORD, CONNECTICUT 06492

06383 PANDUIT CORPORATION
17301 RIDGELAND AVENUE
TINLEY PARK, ILLINOIS 60477-3048

06710 LAMSON AND SESSIONS CO THE VALLEY-TODECO
12975 BRADLEY AVENUE
SYLMAR, CALIFORNIA 91342-3830

06725 AIR INDUSTRIES CORPORATION
12570 KNOTT STREET
GARDEN GROVE, CALIFORNIA 92641-3932

06950 SCREWCORP VSI CORP AEROSPACE PRODUCTS DIV FAIRCHILD IND INC
13001 EAST TEMPLE AVE. PO BOX 730
CITY OF INDUSTRY, CALIFORNIA 91746-1417

08717 SLOAN COMPANY, THE
7704 SAN FERNANDO ROAD
SUN VALLEY, CALIFORNIA 91353

08806 GENERAL ELECTRIC CO MINIATURE LAMP PRODUCTS DEPT
NELA PARK
CLEVELAND, OHIO 44112

11815 CHERRY AEROSPACE FASTENERS DIV OF TEXTRON
1224 EAST WARNER AVENUE PO BOX 2157
SANTA ANA, CALIFORNIA 92707

25-23-06

ILLUSTRATED PARTS LIST
01.1 Page 1002
Apr 01/92

**BOEING**
COMPONENT
MAINTENANCE MANUALVENDORS

13556 CINCH CYLINDRICAL DIV OF LABINAL COMPONENTS AND SYSTEM
8821 SCIENCE CENTER DRIVE
MINNEAPOLIS, MINNESOTA 55428-3619

15653 KAYNAR MICRODOT AEROSPACE FASTENING SYSTEM
800 SOUTH COLLEGE BLVD PO BOX 3001
FULLERTON, CALIFORNIA 92634-3001

16115 PECO MANUFACTURING CO INC
PO BOX 02156 4707 SOUTHEAST 17TH STREET
PORTLAND, OREGON 97202-4714

16632 FLEXFAB, INCORPORATED
1843 GUN LAKE ROAD
HASTINGS, MICHIGAN 49058-9275

21868 PORTER HK CO INC THERMOID DIV GOVT SALES OFFICE
1301 W SANDUSKY AVE
BELLEFONTAINE, OHIO 43311-1082

27624 PAUL R BRILES INC P.B. FASTENER DIV
1700 WEST 132ND STREET PO BOX 1157
GARDENA, CALIFORNIA 90249-2008

34252 GULF OIL CO USA DIV OF GULF OIL CORP
PO BOX 1519
HOUSTON, TEXAS 77001

49367 PYLE-NATIONAL CO DIV OF BRAND-REX CO
1334 NORTH KOSTNER AVENUE
CHICAGO, ILLINOIS 60651-1605

52828 REPUBLIC FASTENER MFG CORP
1300 RANCHO CONEJO BLVD
NEWBURY PARK, CALIFORNIA 91320-1405

56878 SPS TECHNOLOGIES INC AEROSPACE AND INDUSTRIAL PRODUCTS DIV
HIGHLAND AVENUE
JENKINTOWN, PENNSYLVANIA 19046

25-23-06ILLUSTRATED PARTS LIST
01.1 Page 1003
Apr 01/92

VENDORS

59703 SEE V18843

71087 BOOTS ACFT NUT DIV TOWNSEND CO SEE TEXTRON INC CHERRY
FASTENER TOWNSEND DIV V11815

72794 DZUS FASTENER COMPANY, INCORPORATED
425 UNION BOULEVARD
WEST ISLIP, NEW YORK 11795-3123

72962 ELASTIC STOP NUT A DIV OF HARTFORD INDUSTRIES INC
2330 VAUXHALL ROAD
UNION, NEW JERSEY 07083-5038

73197 HI-SHEAR TECHNOLOGY CORP
2600 SKYPARK DRIVE
TORRANCE, CALIFORNIA 90509

75345 KIRKHILL RUBBER CO
300 EAST CYPRESS STREET
BREA, CALIFORNIA 92621-4007

80539 SPS TECHNOLOGIES INC AEROSPACE PRODUCTS DIV
2701 SOUTH HARBOR BOULEVARD PO BOX 1259
SANTA ANA, CALIFORNIA 92702-1259

81872 OLYMPIC PLASTICS CO SUB OF INTERCONTENTAL DIAMOND CORP
5800 WEST JEFFERSON BOULEVARD
LOS ANGELES, CALIFORNIA 90016-3109

84914 LOS ANGELES STD RUBBER CO SEE KIRKHILL RUBBER CO V75345

92215 VOI-SHAN DIV OF VSI CORP SUB OF FAIRCHILD INDUSTRIAL INC
8463 HIGUERA STREET
CULVER CITY, CALIFORNIA 90230

93907 TEXTRON INC CAMCAR DIV
600 18TH AVENUE
ROCKFORD, ILLINOIS 61101

95272 SARGENT IND INC STILLMAN SEAL DIV
6020 AVENDIDA ENCINAS PO BOX 2000
CARLSBAD, CALIFORNIA 92008-4407

25-23-06

ILLUSTRATED PARTS LIST
01.1 Page 1004
Apr 01/92

VENDORS

97928 DEUTSCH FASTENER CORP
3969 PARAMONT BOULEVARD
LAKEWOOD, CALIFORNIA 90712-4193

25-23-06

ILLUSTRATED PARTS LIST

01.1 Page 1005

Apr 01/92

PART NUMBER	AIRLINE PART NO.	FIG.	ITEM	TTL REQ
AD1527		1	92	1
AN960JD10		1	60A	2
		1	94J	4
AN960JD10L		1	75A	4
		3	45	4
AN960JD8L		1	53A	2
		3	25	8
AN960PD10		1	60	2
		1	94H	4
AN960PD10L		1	75	4
		1	80A	4
AN960PD8L		1	53	2
BACB28U3B030		3	35	1
BACC10DK2		1	40	4
BACC10DK3		1	42	3
BACC45FN10B5P7		1	10	1
BACD40P4A450		1	92	1
BACN10JC08		1	52	2
BACN10JN06		2	30	1
		2	55	2
BACN10JN08		2	98H	4
BACN10JP3A		2	75	6
BACN10KB3		2	70	1
BACP20BA1		1	43	1
BACR15BA3AD		2	20	2
		2	25	2
		2	45	2
		2	50	4
		2	65	14
		2	80A	8
		2	97M	2
		2	98	8
		3	83	8
BACR15BA4AD		2	90	4
		3	75	4
BACR15BB3AD		2	97H	2
		2	100A	12
		2	110	4
		3	70A	12
		3	80	4
BACS12FA08C6		2	96A	4
BACS12FA3K4		1	70C	4
BACS12FA3K4		3	40	4
BACS12FA3K7		1	35C	7
		1	70F	4
		1	94A	4
BACS38K1		1	25F	4

25-23-06

 ILLUSTRATED PARTS LIST
 01.1 Page 1006
 Jan 01/94


BOEING
 COMPONENT
 MAINTENANCE MANUAL

PART NUMBER	AIRLINE PART NO.	FIG.	ITEM	TTL REQ
BCREF5417		1	45A	1
		3	5	1
BRFM2CA06L		2	30	1
		2	55	2
BRFM20A08		2	98H	4
BRH10A08		1	52	2
BRM200A3		2	75	6
BR1000A3		2	70	1
BOE20564A450		1	92	1
C48-10R10-5P7		1	10	1
H10-08BAC		1	52	2
		2	70	1
MF1000-06BAC		2	30	1
		2	55	2
MF1000-08BAC		2	98H	4
MF53049-06		2	30	1
		2	55	2
MF53049-08		2	98H	4
MK1000-3BAC		2	75	6
MS21042L08		1	52A	2
		3	30	2
MS3367-1-9		1	25D	4
MS35333-38		1	55	4
MS35650-302		1	85	4
		3	50	4
NAS1388-2		1	30	3
NAS1515K4H		1	50	1
		3	10	1
NAS1801-08-12		3	15	1
NAS1801-08-8		3	20	1
NAS1801-3-4		1	70D	4
NAS1801-3-7		1	35B	7
		1	70E	4
		1	94	4
		1	70G	4
		1	94B	4
NS103197-02		2	75	6
NS103218-62		2	30	1
		2	55	2
NS103218-82		2	98H	4
NS202101-82		1	52	2
N2088		1	43	1

25-23-06

 ILLUSTRATED PARTS LIST
 01.1 Page 1007
 Jan 01/94

PART NUMBER	AIRLINE PART NO.	FIG.	ITEM	TTL REQ
RMF9201M82		2	98H	4
RMLH9075-82W		1	52	2
SST2S		1	25F	4
SZ7105		1	43	1
S3-175		2	85	4
		3	85	4
S417T505-3		1	65	2
		80	1	RF
TY90		1	25C	4
		1	25E	4
TY903-5		1	B	AR
		1	E	AR
		1	G	AR
T6S832J		1	52	2
T8076S1032		2	75	6
T8109S1032		2	70	1
T8124S06S		2	30	1
		2	55	2
T8124S08S		2	98H	4
VN101A1-02		2	70	1
VN202A1-02		2	75	6
VN252A62L		2	30	1
		2	55	2
VN252A82		2	98H	4
VN303A82		1	52	2
ZZWAC1710-5P7		1	10	1
102SKWLUCSTDFB1		1	45A	1
		3	5	1
1308		80	15	2
17-20090-1		1	15	1
17-310-01		1	13	1
17-529		1	20	1
214T4200-20		1	93B	1
214T4200-21		1	93C	1
214T4200-5SP		1	93	1
214T4200-6SP		1	93A	1
417T3053-10SP		1	1E	RF
417T3053-102SP		1	5F	RF
417T3053-104SP		1	5G	RF
417T3053-109SP		1	1T	RF
417T3053-110SP		1	1U	RF
417T3053-119SP		1	1V	RF
417T3053-129SP		1	1W	RF
417T3053-130SP		1	5H	RF
417T3053-15		1	105	1
		2	10	RF

25-23-06

 ILLUSTRATED PARTS LIST
 01.1 Page 1008
 Jan 01/94


BOEING
 COMPONENT
 MAINTENANCE MANUAL

PART NUMBER	AIRLINE PART NO.	FIG.	ITEM	TTL REQ
417T3053-151SP		1	1X	RF
		3	1A	RF
417T3053-17		1	106	1
		2	1B	RF
417T3053-19SP		1	1F	RF
417T3053-2SP		1	5B	RF
417T3053-202SP		1	5J	RF
417T3053-204SP		1	5K	RF
417T3053-209SP		1	1Y	RF
417T3053-210SP		1	1Z	RF
417T3053-230SP		1	5L	RF
417T3053-241		1	5N	RF
417T3053-245		1	2A	RF
417T3053-251SP		1	2	RF
		3	1B	RF
417T3053-29SP		1	1G	RF
417T3053-4SP		1	5C	RF
417T3053-40		1	109A	1
		2	5B	RF
417T3053-41SP		1	5D	RF
417T3053-42		1	115	1
		2	10A	RF
417T3053-43SP		1	5M	RF
417T3053-44		1	107A	1
		2	1G	RF
417T3053-45SP		1	1Q	RF
417T3053-5		1	95	1
		2	1	RF
417T3053-50SP		1	5E	RF
417T3053-51		1	95B	1
417T3053-51		2	1H	RF
417T3053-52		1	100B	1
		2	5C	RF
417T3053-55		3	65	1
417T3053-6		1	100	1
		2	5	RF
417T3053-7		1	95A	1
		2	1A	RF
417T3053-8		1	100A	1
		2	5A	RF
417T3053-9SP		1	1D	RF
417T3080-1SP		1	90D	1
417T3080-11SP		1	90G	1
		3	60	1

25-23-06

ILLUSTRATED PARTS LIST

01.1

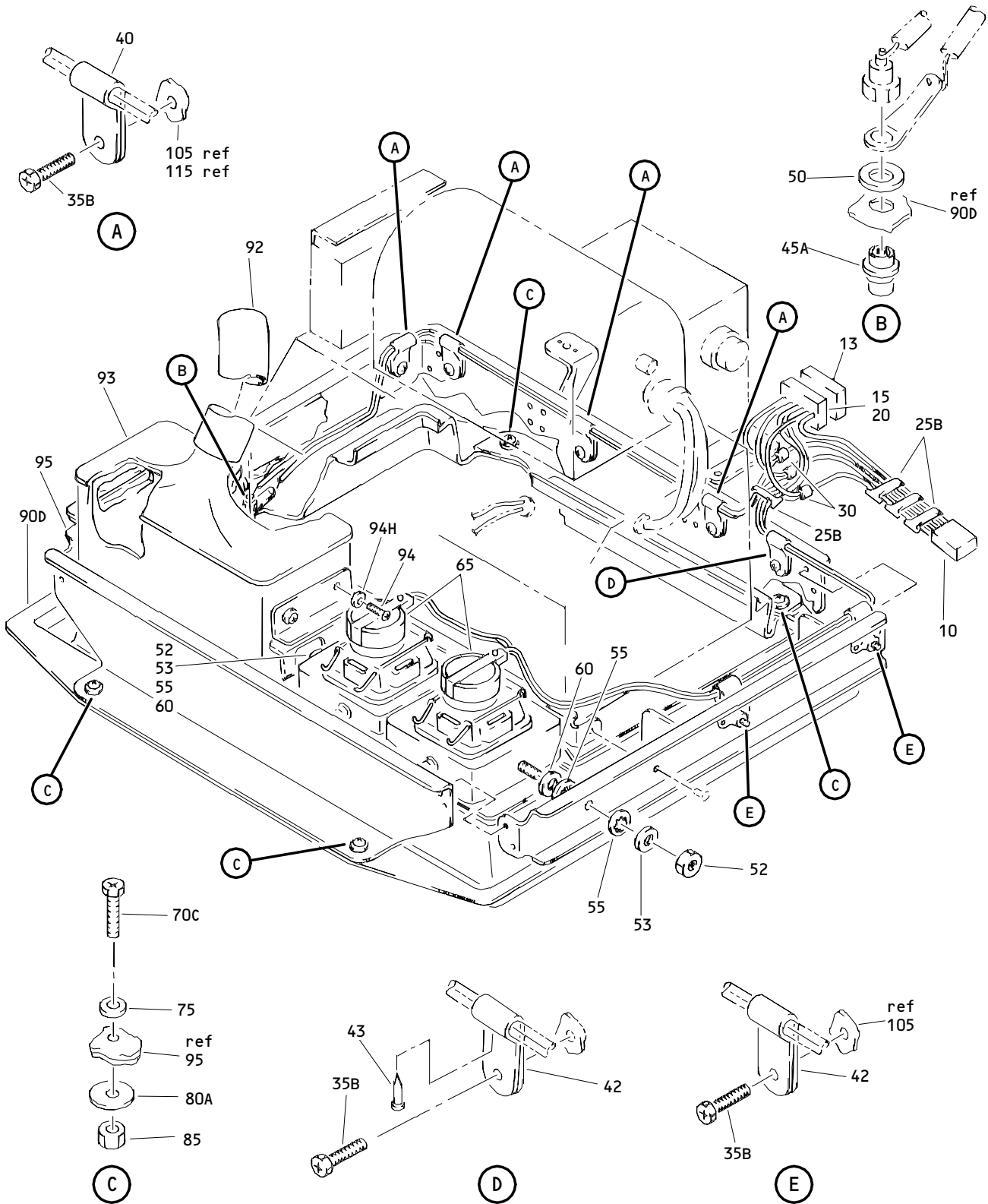
Page 1009

Jan 01/94

PART NUMBER	AIRLINE PART NO.	FIG.	ITEM	TTL REQ
417T3080-12SP		1	90H	1
		3	60A	1
417T3080-22SP		1	90J	1
417T3080-25		1	90L	1
417T3080-26		1	90M	1
417T3090-1		2	105	2
		3	90	2
417T3090-101		2	96N	2
417T3090-133SP		3	55	1
417T3090-2		2	115	2
		3	95	2
417T3090-3		2	120	1
		3	100	1
417T3090-4		2	135	1
417T3090-48		2	125	1
417T3090-49		2	130	1
		3	105	1
417T3090-5		2	95	2
		3	110	2
417T3090-50		2	60	1
417T3090-51		2	35	1
417T3090-6		2	40	1
417T3090-7		2	15	1
417T3090-94		2	130A	1
417T3090-95		2	135A	1
417T3090-96		2	97	2
417T3090-97		2	98M	2
48-10R10-5P7		1	10	1
4841		1	43	1
		80	1	RF
96-82		1	52	2

25-23-06

 ILLUSTRATED PARTS LIST
 01.1 Page 1010
 Jan 01/94



Bin Passenger Service Unit Oxygen and Light Panel Assembly
 Figure 1

25-23-06

ILLUSTRATED PARTS LIST
 01.1 Page 1012
 Jan 01/94


BOEING
 COMPONENT
 MAINTENANCE MANUAL

FIG. & ITEM	PART NO.	AIRLINE PART NUMBER	NOMENCLATURE 1234567	EFF CODE	QTY PER ASSY
01-					
-1	417T3053-1		DELETED		
-1A	417T3053-3		DELETED		
-1B	417T3053-1SP		DELETED		
-1C	417T3053-3SP		DELETED		
-1D	417T3053-9SP		PANEL ASSY-BIN PASS. SVCE UNIT OXY/LT (LH) CMM CONTAINS FIG. 1-3,80	A	RF
-1E	417T3053-10SP		PANEL ASSY-BIN PASS. SVCE UNIT OXY/LT (LH)	B	RF
-1F	417T3053-19SP		PANEL ASSY-BIN PASS. SVCE UNIT OXY/LT (LH)	E	RF
-1G	417T3053-29SP		PANEL ASSY-BIN PASS. SVCE UNIT OXY/LT (LH)	F	RF
-1H	417T3053-30SP		PANEL ASSY-BIN PASS. SVCE UNIT OXY/LT (LH)	G	RF
-1J	417T3053-31SP		DELETED		
-1L	417T3053-33SP		DELETED		
-1M	417T3053-39SP		DELETED		
-1N	417T3053-22SP		DELETED		
-1P	417T3053-24SP		DELETED		
-1Q	417T3053-45SP		PANEL ASSY-BIN PASS. SVCE UNIT OXY/LT (LH)	H	RF
-1R	417T3053-46SP		PANEL ASSY-BIN PASS. SVCE UNIT OXY/LT (LH)	K	RF
-1S	417T3053-49SP		PANEL ASSY-BIN PASS. SVCE UNIT OXY/LT (LH)	J	RF
-1T	417T3053-109SP		PANEL ASSY-BIN PASS. SVCE UNIT OXY/LT (LH)	Q	RF
-1U	417T3053-110SP		PANEL ASSY-BIN PASS. SVCE UNIT OXY/LT (LH)	R	RF
-1V	417T3053-119SP		PANEL ASSY-BIN PASS. SVCE UNIT OXY/LT (LH)	S	RF
-1W	417T3053-129SP		PANEL ASSY-BIN PASS. SVCE UNIT OXY/LT (LH)	T	RF
-1X	417T3053-151SP		PANEL ASSY-BIN PASS. SVCE UNIT OXY WITHOUT LT LH ONLY (FOR DETAILS SEE FIG. 3)	V	RF
-1Y	417T3053-209SP		PANEL ASSY-BIN PASS. SVCE UNIT OXY/LT (LH)	Y	RF
-1Z	417T3053-210SP		PANEL ASSY-BIN PASS. SVCE UNIT OXY/LT (LH)	Z	RF

25-23-06

 ILLUSTRATED PARTS LIST
 01.1 Page 1013
 Apr 01/92

FIG. & ITEM	PART NO.	AIRLINE PART NUMBER	NOMENCLATURE 1234567	EFF CODE	QTY PER ASSY
01- -2	417T3053-251SP		PANEL ASSY-BIN PASS. SVCE UNIT OXY WITHOUT LT LH ONLY (FOR DETAILS SEE FIG. 3)	AB	RF
-2A	417T3053-245		PANEL ASSY-BIN PASS. SVCE UNIT OXY/LT (LH)	AE	RF
-5	417T3053-2		DELETED		
-5A	417T3053-4		DELETED		
-5B	417T3053-2SP		PANEL ASSY-BIN PASS. SVCE OXY/LT (RH)	C	RF
-5C	417T3053-4SP		PANEL ASSY-BIN PASS. SVCE OXY/LT (RH)	D	RF
-5D	417T3053-41SP		PANEL ASSY-BIN PASS. SVCE UNIT OXY/LT (RH)	L	RF
-5E	417T3053-50SP		PANEL ASSY-BIN PASS. SVCE UNIT OXY/LT (RH)	M	RF
-5F	417T3053-102SP		PANEL ASSY-BIN PASS. SVCE UNIT OXY/LT (RH)	N	RF
-5G	417T3053-104SP		PANEL ASSY-BIN PASS. SVCE UNIT OXY/LT (RH)	P	RF
-5H	417T3053-130SP		PANEL ASSY-BIN PASS. SVCE UNIT OXY/LT (RH)	U	RF
-5J	417T3053-202SP		PANEL ASSY-BIN PASS. SVCE UNIT OXY/LT (RH)	W	RF
-5K	417T3053-204SP		PANEL ASSY-BIN PASS. SVCE UNIT OXY/LT (RH)	X	RF
-5L	417T3053-230SP		PANEL ASSY-BIN PASS. SVCE UNIT OXY/LT (RH)	AA	RF
R -5M	417T3053-43SP		PANEL ASSY-BIN PASS. SVCE UNIT OXY/LT (RH)	AC	RF
-5N	417T3053-241		PANEL ASSY-BIN PASS. SVCE UNIT OXY/LT (RH)	AD	RF
-7	417T3053-11		DELETED		
-7A	417T3053-11SP		DELETED		
10	C48-10R10-5P7		.CONNECTOR- (V13556) (SPEC BACC45FN10B5P7) (OPT ZZWAC1710-5P7 (V49367)) (OPT 48-10R10-5P7 (V02660))	A-U, W-AA, AC,AD AE	1

25-23-06

 ILLUSTRATED PARTS LIST
 01.1 Page 1014
 Jan 01/94


BOEING
 COMPONENT
 MAINTENANCE MANUAL

FIG. & ITEM	PART NO.	AIRLINE PART NUMBER	NOMENCLATURE 1234567	EFF CODE	QTY PER ASSY
01-13	17-310-01		.CLAMP- (V02660)	A,B, E-K,M Q-U, Y-AA, AE	1
15	17-20090-1		.CONNECTOR- (V02660)	A,B, E-K,M Q-U, Y-AA, AE	1
20	17-529		.LATCH-SPR (V02660)	A,B, E-K,M Q-U, Y-AA, AE	1
25	TY25M		DELETED		
-25A	TY23M		DELETED		
25B	TY903-5		.CLAMP-PLASTIC (V06383) (OPT ITEMS 25C, 25D)	A-M,A C	AR
-25C	TY90		.STRAP-PLASTIC (V59703) (OPT ITEMS 25B, 25D)	A-M,A C	AR
-25D	MS3367-1-9		.STRAP-PLASTIC (OPT ITEMS 25B, 25C)	A-M,A C	AR
-25E	TY903-5		.CLAMP-PLASTIC (V06383) (OPT ITEM 25F)	N-U, W-AA	AR
-25F	SST2S		.STRAP- (V06383) (SPEC BACS38K1) (OPT ITEM 25E)	N-U, W-AA	AR
-25G	TY903-5		.CLAMP-PLASTIC (V06383)	AD,AE	AR
30	NAS1388-2		.SPLICE	A,B, E-K,M Q-U, Y-AA, AE	3
35	NAS623-3-3		DELETED		
35A	NAS1801-3-4		DELETED		
35B	NAS1801-3-7		.SCREW	H-M,A C	7

25-23-06

ILLUSTRATED PARTS LIST

01.1

Page 1015

Jan 01/94

FIG. & ITEM	PART NO.	AIRLINE PART NUMBER	NOMENCLATURE 1234567	EFF CODE	QTY PER ASSY
01- -35C	BACS12FA3K7		.SCREW- (V06710) (SPEC BACS12FA3K7) (OPT BACS12FA3K7 (V06725)) (OPT BACS12FA3K7 (V06950)) (OPT BACS12FA3K7 (V27624)) (OPT BACS12FA3K7 (V34252)) (OPT BACS12FA3K7 (V56878)) (OPT BACS12FA3K7 (V73197)) (OPT BACS12FA3K7 (V80539)) (OPT BACS12FA3K7 (V85498)) (OPT BACS12FA3K7 (V92215)) (OPT BACS12FA3K7 (V93907)) (OPT BACS12FA3K7 (V97928)) (OPT ITEM 35D)	N-U, W-AA AD,AE	7
-35D	NAS1801-3-7		.SCREW- (OPT ITEM 35C)	N-U, W-AA AD,AE	7
40	BACC10DK2		.CLAMP- (V16115) (SPEC BACC10DK2) (OPT BACC10DK2 (V81872))	A-U, W-AA, AC,AD ,AE	4
42	BACC10DK3		.CLAMP- (V16115) (SPEC BACC10DK3) (OPT BACC10DK3 (V81872))	A-U, W-AA, AC,AD ,AE	3

25-23-06

ILLUSTRATED PARTS LIST

01.1

Page 1016

Jan 01/94


BOEING
 COMPONENT
 MAINTENANCE MANUAL

FIG. & ITEM	PART NO.	AIRLINE PART NUMBER	NOMENCLATURE 1234567	EFF CODE	QTY PER ASSY
01-43	N2088		.PLUG- (V75345) (SPEC BACP20BA1) (OPT SZ7105 (V95272)) (OPT 4841 (V84914))	A-U, W-AA, AC,AD ,AE	1
45 45A	BCREF1976 BCREF5417		DELETED .LIGHT-IND (V08717) (102SKWLUCSTDFB12H5)	A-U, W-AA, AC,AD ,AE	1
50	NAS1515K4H		.WASHER	A-U, W-AA, AC,AD ,AE	1
52	H10-08BAC		.NUT- (V15653) (SPEC BACN10JC08) (OPT NS202101-82 (V80539)) (OPT RMLH9075-82W (V72962)) (OPT T6S832J (V71087)) (OPT VN303A82 (V92215)) (OPT 96-82 (V80539)) (OPT BRH10A08 (V52828)) (OPT T6S832J (V11815))	A-U, A-M,A C	2
-52A	MS21042L08		.NUT	N-U, W-AA, AD,AE	2
53	AN960PD8L		.WASHER	A-M,A C	2
-53A	AN960JD8L		.WASHER	N-U, W-AA, AD,AE	2
55	MS35333-38		.WASHER		4

25-23-06

ILLUSTRATED PARTS LIST

01.1

Page 1017

Jan 01/94

FIG. & ITEM	PART NO.	AIRLINE PART NUMBER	NOMENCLATURE 1234567	EFF CODE	QTY PER ASSY
01-60	AN960PD10		.WASHER	A-M,A C	2
-60A	AN960JD10		.WASHER	N-U, W-AA, AD,AE	2
R 65	81000-13303		.LIGHT ASSY-READING (VS5006) (SPEC S417T505-3) (FOR DETAILS SEE FIG. 80)	A-U, W-AA, AC,AD AE	2
70	NAS603-4		DELETED		
70A	NAS1801-3-4		DELETED		
-70B	BACS12FA3K7		DELETED		
R 70C	BACS12FA3K4		.SCREW- (OPT ITEM 70D)	N-U, W-AA	4
-70D	NAS1801-3-4		.SCREW- (OPT ITEM 70C)	N-U, W-AA	4
R -70E	NAS1801-3-7		.SCREW	A-M,A C	4
-70F	BACS12FA3K7		.SCREW (OPT ITEM 70G)	AD,AE	4
-70G	NAS1801-3-7		.SCREW (OPT ITEM 70F)	AD,AE	4
75	AN960PD10L		.WASHER	A-M,A C	4
-75A	AN960JD10L		.WASHER	N-U, W-AA, AD,AE	4
80	AN970-3		DELETED		
80A	AN960PD10L		.WASHER	A-G	4
85	MS35650-302		.NUT	A-U, W-AA, AC,AD ,AE	4

25-23-06

ILLUSTRATED PARTS LIST

01.1

Page 1018

Jan 01/94


BOEING
 COMPONENT
 MAINTENANCE MANUAL

FIG. & ITEM	PART NO.	AIRLINE PART NUMBER	NOMENCLATURE 1234567	EFF CODE	QTY PER ASSY
01-					
90	417T3080-1		DELETED		
-90A	417T3080-2		DELETED		
-90B	417T3080-5		.PANEL-FACE	H-K,M	1
-90C	417T3080-6		DELETED		
90D	417T3080-1SP		.PANEL-FACE	A,B, E-G	1
-90E	417T3080-2SP		.PANEL-FACE	C,D	1
-90F	417T3080-6SP		.PANEL-FACE	L,AC	1
-90G	417T3080-11SP		.PANEL-FACE	Q-U	1
-90H	417T3080-12SP		.PANEL-FACE	N,P	1
-90J	417T3080-22SP		.PANEL-FACE	W,X	1
-90K	417T3080-21SP		.PANEL-FACE	Y-AA	1
-90L	417T3080-25		.PANEL-FACE	AE	1
-90M	417T3080-26		.PANEL-FACE	AD	1
92	BOE20564A450		.DUCT- (V16632) (SPEC BACD40P4A450) (OPT AD1527 (V21868))	H-M,A C,AD, AE	1
93	214T4200-5SP		.OUTLET ASSY-GASPER	H-K,M	1
-93A	214T4200-6SP		.OUTLET ASSY-GASPER ATTACHING PARTS	L,AC	1
-93B	214T4200-20		.OUTLET ASSY-GASPER	AE	1
-93C	214T4200-21		.OUTLET ASSY-GASPER	AD	1
94	NAS1801-3-7		.SCREW	H-M,A C	4
-94A	BACS12FA3K7		.SCREW (OPT ITEM 94B)	AD,AE	4
-94B	NAS1801-3-7		.SCREW (OPT ITEM 94A)	AD,AE	4
94H	AN960PD10		.WASHER	H-M,A C	4
-94J	AN960JD10		.WASHER *-----	AD,AE	4
95	417T3053-5		.FRAME ASSY- (FOR DETAILS SEE FIG. 2)	A,Q,Y	1
-95A	417T3053-7		.FRAME ASSY- (FOR DETAILS SEE FIG. 2)	B,R,Z	1
-95B	417T3053-51		.FRAME ASSY- (FOR DETAILS SEE FIG. 2)	J	1

25-23-06

ILLUSTRATED PARTS LIST

01.1

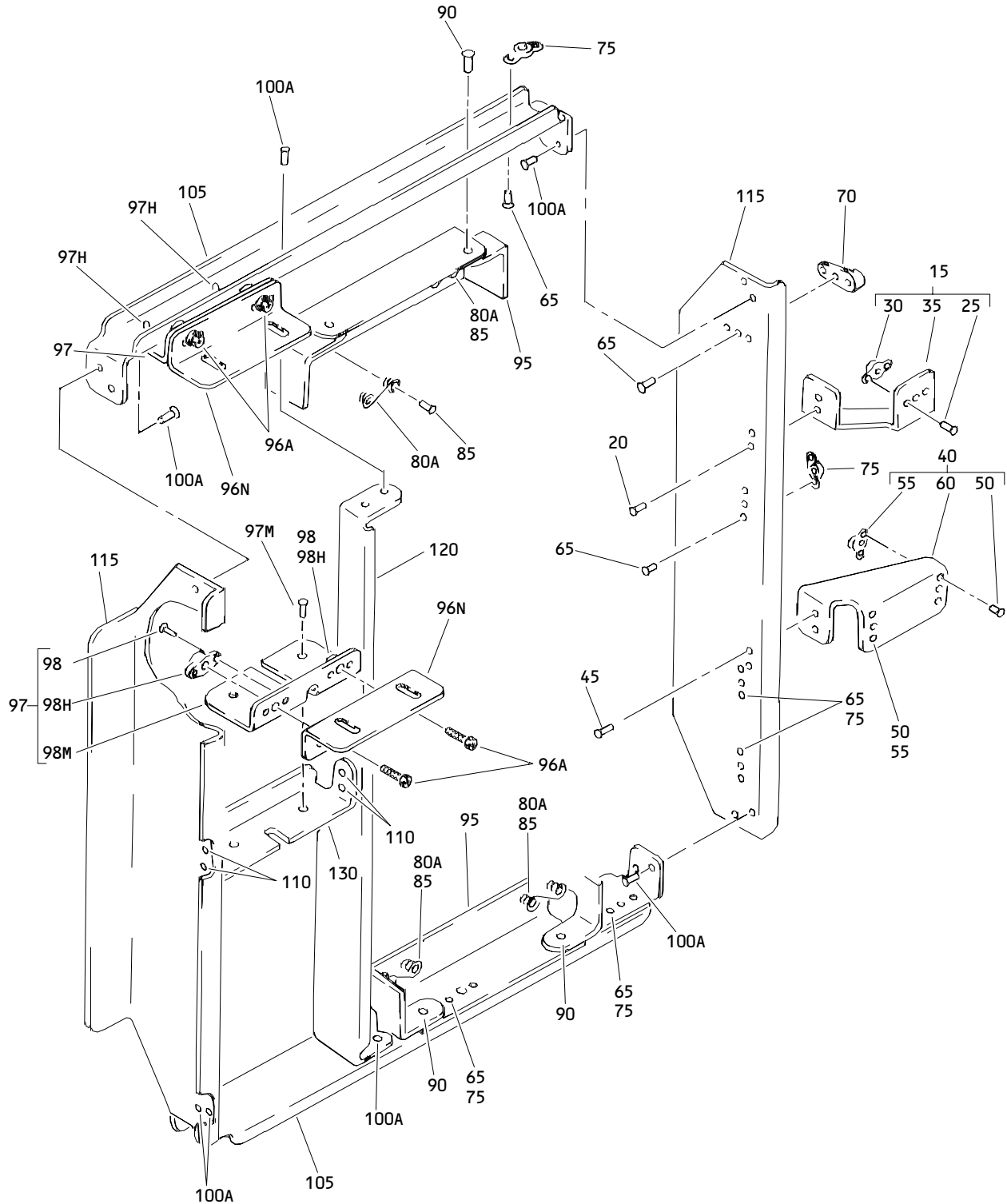
Page 1019

Jan 01/94

FIG. & ITEM	PART NO.	AIRLINE PART NUMBER	NOMENCLATURE 1234567	EFF CODE	QTY PER ASSY
01- -100	417T3053-6		.FRAME ASSY- (FOR DETAILS SEE FIG. 2)	C,N,W	1
-100A	417T3053-8		.FRAME ASSY- (FOR DETAILS SEE FIG. 2)	D,P,X	1
-100B	417T3053-52		.FRAME ASSY- (FOR DETAILS SEE FIG. 2)	M	1
-105	417T3053-15		.FRAME ASSY- (FOR DETAILS SEE FIG. 2)	E,F,S	1
-106	417T3053-17		.FRAME ASSY- (FOR DETAILS SEE FIG. 2)	T G,U,A	1
-107	417T3053-35		DELETED	A	
-107A	417T3053-44		.FRAME ASSY- (FOR DETAILS SEE FIG. 2)	H,K, AE	1
-108	417T3053-37		DELETED		
-109	417T3053-26		DELETED		
-109A	417T3053-40		.FRAME ASSY- (FOR DETAILS SEE FIG. 2)	L,AD	1
-110	417T3053-28		DELETED		
R -115	417T3053-42		.FRAME ASSY- (FOR DETAILS SEE FIG. 2)	AC	1

25-23-06

 ILLUSTRATED PARTS LIST
 01.1 Page 1020
 Jan 01/94



Bin Passenger Service Unit Oxygen and Light Frame Assembly
 Figure 2

25-23-06

ILLUSTRATED PARTS LIST
 01.1 Page 1022
 Apr 01/92


BOEING
 COMPONENT
 MAINTENANCE MANUAL

FIG. & ITEM	PART NO.	AIRLINE PART NUMBER	NOMENCLATURE 1234567	EFF CODE	QTY PER ASSY
02- -1	417T3053-5		FRAME ASSY-BIN PASS. SVCE UNIT OXY/LT (LH)	A,Q,Y	RF
-1A	417T3053-7		FRAME ASSY-BIN PASS. SVCE UNIT OXY/LT (LH)	B,R,Z	RF
-1B	417T3053-17		FRAME ASSY-BIN PASS. SVCE UNIT OXY/LT (LH)	G,U,A A	RF
-1C	417T3053-35		DELETED		
-1D	417T3053-37		DELETED		
-1E	417T3053-26		DELETED		
-1F	417T3053-28		DELETED		
-1G	417T3053-44		FRAME ASSY-BIN PASS. SVCE UNIT OXY/LT (LH)	H,K	RF
-1H	417T3053-51		FRAME ASSY-BIN PASS. SVCE UNIT OXY/LT (LH)	J	RF
-5	417T3053-6		FRAME ASSY-BIN PASS. SVCE UNIT OXY/LT (RH)	C,N,W	RF
-5A	417T3053-8		FRAME ASSY-BIN PASS. SVCE UNIT OXY/LT (RH)	D,P,X	RF
-5B	417T3053-40		FRAME ASSY-BIN PASS. SVCE UNIT OXY/LT (RH)	L	RF
-5C	417T3053-52		FRAME ASSY-BIN PASS. SVCE UNIT OXY/LT (RH)	M	RF
-10	417T3053-15		FRAME ASSY-BIN PASS. SVCE UNIT OXY/LT (LH)	E,F,S T	RF
R -10A	417T3053-42		FRAME ASSY-BIN PASS. SVCE UNIT OXY/LT (LH)	AC	RF
15	417T3090-7		.BRACKET ASSY-DECODER	A,B, E-K,M Q-U, Y-AA	1
20	BACR15BA3AD		ATTACHING PARTS .RIVET- (SIZE DETERMINE ON INST)	A,B, E-K,M Q-U, Y-AA	2
25	BACR15BA3AD		-----*----- ..RIVET- (SIZE DETERMINE ON INST)	A,B, E-K,M Q-U, Y-AA	2

25-23-06

 ILLUSTRATED PARTS LIST
 01.1 Page 1023
 Apr 01/92

FIG. & ITEM	PART NO.	AIRLINE PART NUMBER	NOMENCLATURE 1234567	EFF CODE	QTY PER ASSY
02-30	T8124S06S		..NUTPLATE- (V71087) (SPEC BACN10JN06) (OPT BRFM2CA06L (V52828)) (OPT MF1000-06BAC (V15653)) (OPT NS103218-62 (V80539)) (OPT VN252A62L (V92215)) (OPT VN252A62L (V92215)) (OPT MF53049-06 (V15653))	A,B, E-K,M ,Q-U, Y-AA	1
35	417T3090-51		..BRACKET-DECODER	A,B, E-K,M ,Q-U, Y-AA	1
40	417T3090-6		.BRACKET ASSY-DECODER	A,B, E-K,M ,Q-U, Y-AA	1
45	BACR15BA3AD		ATTACHING PARTS .RIVET- (SIZE DETERMINE ON INST) -----*-----	A,B, E-K,M ,Q-U, Y-AA	2
50	BACR15BA3AD		..RIVET- (SIZE DETERMINE ON INST)	A,B, E-K,M ,Q-U, Y-AA	4

25-23-06

ILLUSTRATED PARTS LIST

01.1

Page 1024

Apr 01/92


BOEING
 COMPONENT
 MAINTENANCE MANUAL

FIG. & ITEM	PART NO.	AIRLINE PART NUMBER	NOMENCLATURE 1234567	EFF CODE	QTY PER ASSY
02-55	T8124S06S		. .NUTPLATE- (V71087) (SPEC BACN10JN06) (OPT BRFM2CA06L (V52828)) (OPT MF1000-06BAC (V15653)) (OPT NS103218-62 (V80539)) (OPT VN252A62L (V92215)) (OPT VN252A62L (V92215)) (OPT MF53049-06 (V15653))	A,B, E-K,M ,Q-U, Y-AA	2
60	417T3090-50		. .BRACKET-DECODER	A,B, E-K,M ,Q-U, Y-AA	1
65	BACR15BA3AD		.RIVET- (SIZE DETERMINE ON INST)	A-U, W-AA, AC	14
70	BR1000A3		.NUTPLATE- (V52828) (SPEC BACN10KB3) (OPT K2000-3 (V15653)) (OPT T8109S1032 (V11815)) (OPT VN101A1-02 (V92215)) (OPT K2000-3 (V15653)) (OPT VN101A1-02 (V92215)) (OPT ITEM 75)	A-U, W-AA, AC	1

25-23-06

 ILLUSTRATED PARTS LIST
 01.1 Page 1025
 Apr 01/92

FIG. & ITEM	PART NO.	AIRLINE PART NUMBER	NOMENCLATURE 1234567	EFF CODE	QTY PER ASSY
R 02-75	BRM200A3		.NUTPLATE- (V52828) (SPEC BACN10JP3A) (OPT MK1000-3BAC (V15653)) (OPT NS103197-02 (V80539)) (OPT T8076S1032 (V71087)) (OPT T8076S1032 (V11815)) (OPT VN202A1-02 (V92215)) (OPT ITEM 70)	A-U, W-AA, AC	6
80	BACR15BB3AD		DELETED		
80A	BACR15BA3AD		.RIVET- (SIZE DETERMINE ON INST)	A-U, W-AA, AC	8
85	S3-175		.SPRING-RTNR (V72794)	A-U, W-AA, AC	4
90	BACR15BA4AD		.RIVET- (SIZE DETERMINE ON INST)	A-U, W-AA, AC	4
95	417T3090-5		.BRACKET-OXY	A-U, W-AA, AC	2
96	NAS1801-08-7		DELETED		
96A	BACS12FA08C6		.SCREW	H-M,A C	4
96H	AN960PD8		DELETED		
96M	417T3090-98		DELETED		
96N	417T3090-101		.BRACKET-GASPER	H-M,A C	2

25-23-06

 ILLUSTRATED PARTS LIST
 01.1 Page 1026
 Apr 01/92


BOEING
 COMPONENT
 MAINTENANCE MANUAL

FIG. & ITEM	PART NO.	AIRLINE PART NUMBER	NOMENCLATURE 1234567	EFF CODE	QTY PER ASSY
02-97	417T3090-96		.BRACKET ASSY-GASPER	H-M,A C	2
97H	BACR15BB3AD		ATTACHING PARTS .RIVET- (SIZE DETERMINE ON INST)	H-M,A C	2
97M	BACR15BA3AD		.RIVET- (SIZE DETERMINE ON INST)	H-M,A C	2
98	BACR15BA3AD		-----*----- ..RIVET- (SIZE DETERMINE ON INST)	H-M,A C	4
98H	T8124S08S		..NUTPLATE- (V71087) (SPEC BACN10JN08) (OPT BRFM20A08 (V52828)) (OPT MF1000-08BAC (V15653)) (OPT NS103218-82 (V80539)) (OPT RMF9201M82 (V72962)) (OPT VN252A82 (V92215)) (OPT MF53049-08 (V15653))	H-M,A C	2
98M	417T3090-97		..BRACKET-GASPER	H-M,A C	1
100 100A	BACR15BA3AD BACR15BB3AD		DELETED .RIVET- (SIZE DETERMINE ON INST)	A-U, W-AA, AC	12
105	417T3090-1		.CHANNEL-END	A-U, W-AA, AC	2
110	BACR15BB3AD		.RIVET- (SIZE DETERMINE ON INST)	A-U, W-AA, AC	4
115	417T3090-2		.CHANNEL-SIDE	A-U, W-AA, AC	2

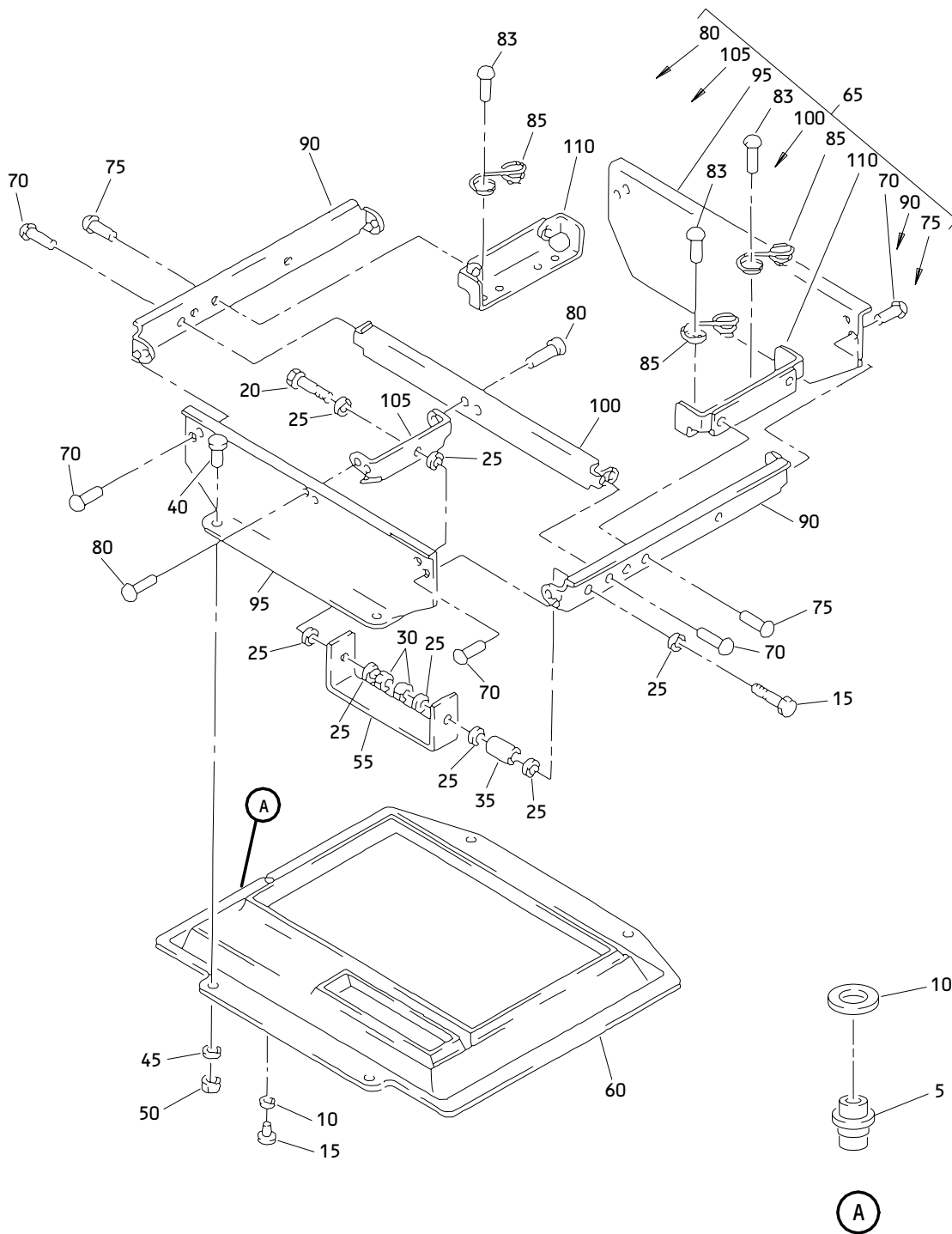
25-23-06

 ILLUSTRATED PARTS LIST
 01.1 Page 1027
 Apr 01/92

FIG. & ITEM	PART NO.	AIRLINE PART NUMBER	NOMENCLATURE 1234567	EFF CODE	QTY PER ASSY
02-120	417T3090-3		.ANGLE-DIVIDER	A,B, E-K,M Q-U, Y-AA	1
-125	417T3090-48		.ANGLE-DIVIDER	C,D,L N,P, W,X,A C	1
130	417T3090-49		.ANGLE-LT	A,B, E-G, Q-U, Y-AA	1
-130A	417T3090-94		.ANGLE-LT	H-K,M	1
-135	417T3090-4		.ANGLE-LT	C,D,N P,W, X	1
-135A	417T3090-95		.ANGLE-LT	L,AC	1

25-23-06

 ILLUSTRATED PARTS LIST
 01.1 Page 1028
 Apr 01/92



Bin Passenger Service Unit Oxygen without Light Panel Assembly
 Figure 3

25-23-06

ILLUSTRATED PARTS LIST
 01.1 Page 1030
 Apr 01/92


BOEING
 COMPONENT
 MAINTENANCE MANUAL

FIG. & ITEM	PART NO.	AIRLINE PART NUMBER	NOMENCLATURE 1234567	EFF CODE	QTY PER ASSY
03-			DELETED		
-1	417T3053-151P				
-1A	417T3053-151SP		PANEL ASSY-BIN PASS. SVCE UNIT OXY WITHOUT LT LH ONLY	V	RF
-1B	417T3053-251SP		PANEL ASSY-BIN PASS. SVCE UNIT OXY WITHOUT LT LH ONLY	AB	RF
5	BCREF5417		.LIGHT-IND (V08717) (102SKWLUCSTDFB12H5)	V,AB	1
10	NAS1515K4H		.WASHER	V,AB	1
15	NAS1801-08-12		.SCREW	V,AB	1
20	NAS1801-08-8		.SCREW	V,AB	1
25	AN960JD8L		.WASHER	V,AB	8
30	MS21042L08		.NUT	V,AB	2
35	BACB28U3B030		.BUSHING	V,AB	1
40	BACS12FA3K4		.SCREW	V,AB	4
45	AN960JD10L		.WASHER	V,AB	4
50	MS35650-302		.NUT	V,AB	4
55	417T3090-133SP		.PLATE ASSY-COVER	V,AB	1
60	417T3080-11SP		.PANEL-FACE	V	1
-60A	417T3080-21SP		.PANEL-FACE	AB	1
65	417T3053-55		.FRAME ASSY	V,AB	1
70	BACR15BA3AD		DELETED		
70A	BACR15BB3AD		..RIVET- (SIZE DETERMINE ON INST)	V,AB	12
75	BACR15BA4AD		..RIVET- (SIZE DETERMINE ON INST)	V,AB	4
80	BACR15BB3AD		..RIVET- (SIZE DETERMINE ON INST)	V,AB	4
83	BACR15BA3AD		..RIVET- (SIZE DETERMINE ON INST)	V,AB	8
85	S3-175		..SPRING-RTNR (V72794)	V,AB	4

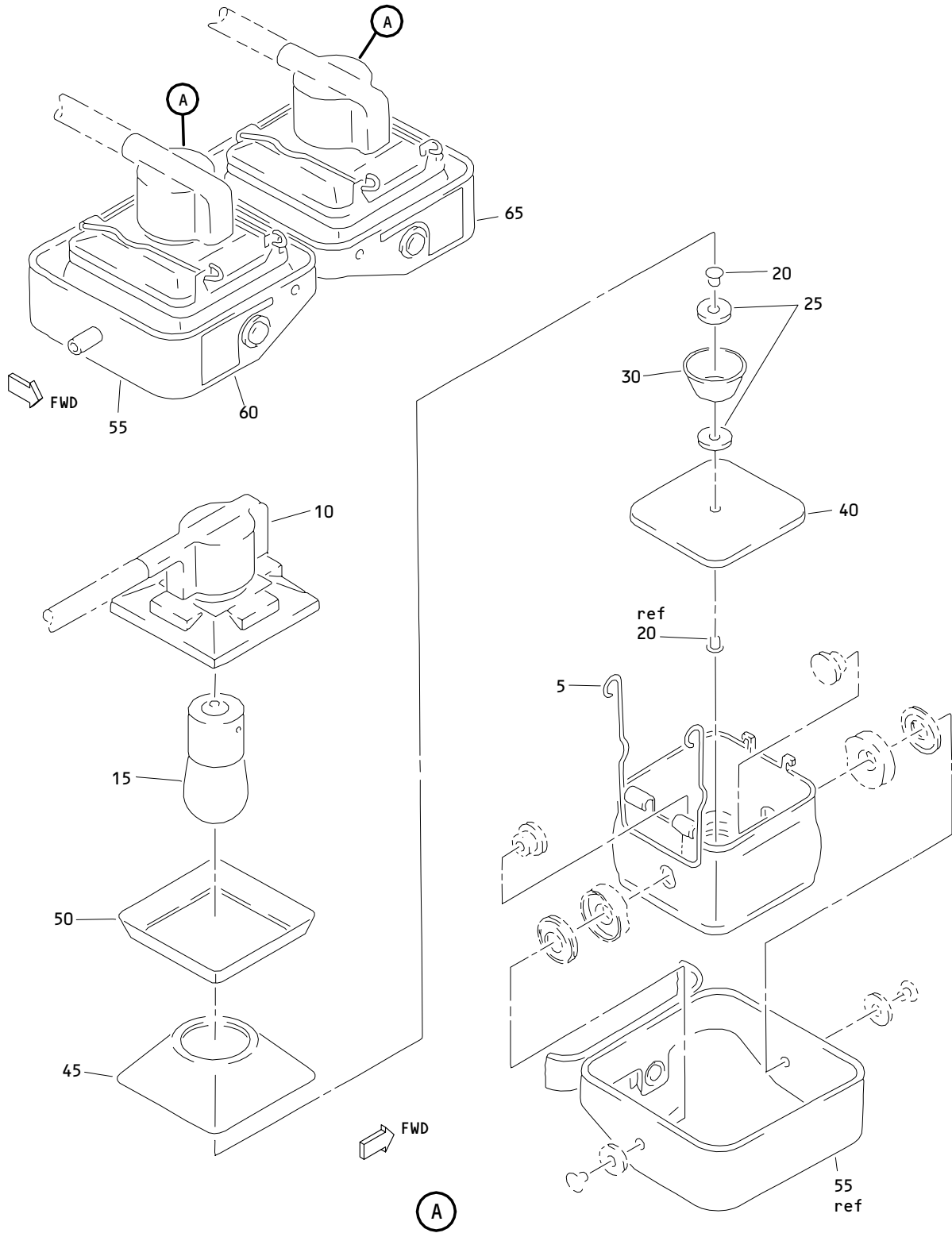
25-23-06

 ILLUSTRATED PARTS LIST
 01.1 Page 1031
 Apr 01/92

FIG. & ITEM	PART NO.	AIRLINE PART NUMBER	NOMENCLATURE 1234567	EFF CODE	QTY PER ASSY
03-					
90	417T3090-1		..CHANNEL-END	V,AB	2
95	417T3090-2		..CHANNEL-SIDE	V,AB	2
100	417T3090-3		..ANGLE-DIVIDER	V,AB	1
105	417T3090-49		..ANGLE-LT	V,AB	1
110	417T3090-5		..BRACKET-OXY	V,AB	2

25-23-06

 ILLUSTRATED PARTS LIST
 01.1 Page 1032
 Apr 01/92



Reading Light Assembly
 Figure 80

25-23-06

ILLUSTRATED PARTS LIST
 01.1 Page 1034
 Apr 01/92


BOEING
 COMPONENT
 MAINTENANCE MANUAL

FIG. & ITEM	PART NO.	AIRLINE PART NUMBER	NOMENCLATURE 1234567	EFF CODE	QTY PER ASSY
80- -1	81000-13303		LIGHT ASSY-READING (VS5006) (SPEC S417T505-3)	A-U, W-Z	RF
5	81107-13301		.SPRING-HOLDING (VS5006)	A-U, W-Z	2
10	81007-13303		.SOCKET ASSY- (VS5006)	A-U, W-Z	2
15	1308		.BULB- (V08806)	A-U, W-Z	2
20	89928-00020		.EYELET- (VS5006)	A-U, W-Z	2
25	81131-13301		.WASHER- (VS5006)	A-U, W-Z	4
30	81110-13301		.SHIELD-LIGHT (VS5006)	A-U, W-Z	2
40	81109-13302		.LENS- (VS5006)	A-U, W-Z	2
45	81111-13301		.REFLECTOR- (VS5006)	A-U, W-Z	2
50	81112-13301		.SUPPORT-REFLECTOR (VS5006)	A-U, W-Z	2
55	81006-13301		.BRACKET ASSY- (VS5006)	A-U, W-Z	1
60	81125-13301		.PLATE-CIRCUIT (VS5006)	A-U, W-Z	1
65	81105-13301		.NAMEPLATE- (VS5006)	A-U, W-Z	1

25-23-06

 ILLUSTRATED PARTS LIST
 01.1 Page 1035
 Apr 01/92